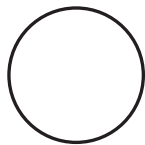


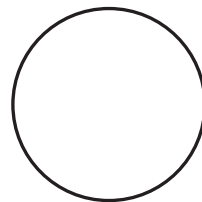
Pattern and tutorial for Putz Potted Tree



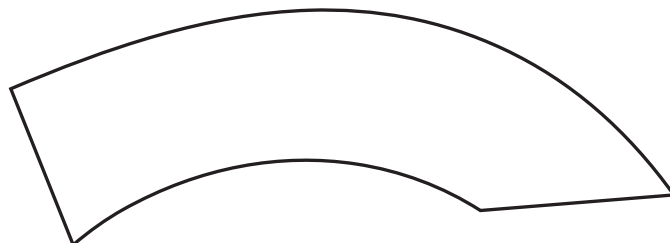
Bottom

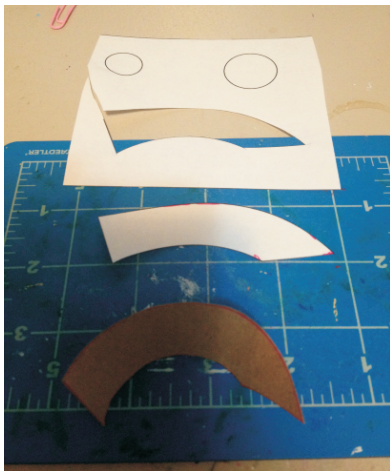


Inside

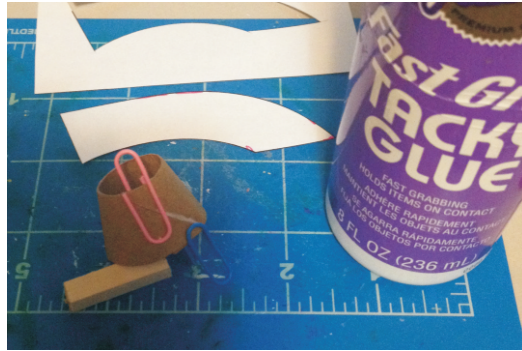


Cone

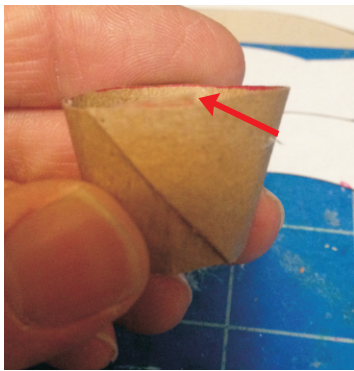




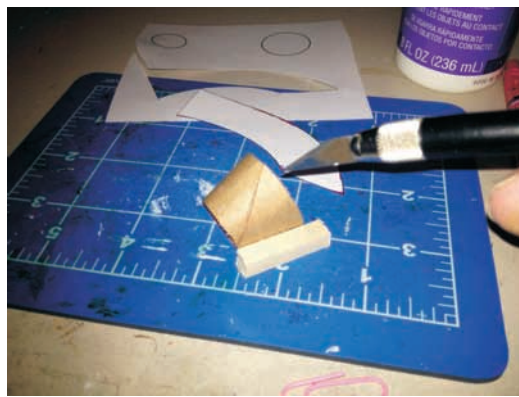
1. Print off and cut out pattern on paper. Trace paper pattern on Chipboard. Cut out pattern on Chipboard. Then use fingers to create curve in pattern, wrap around finger like a cone. Be careful not to crease the chipboard.



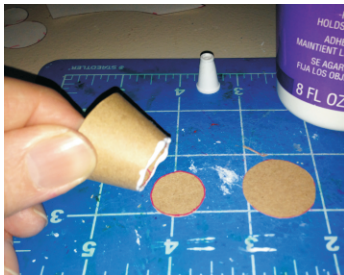
2. Apply glue to edge of chipboard. Roll Chipboard back into cone shape. Use paper clips to hold cone together while glue is drying.



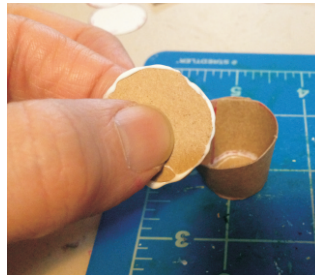
3. Notice where edge of Chipboard sticks up on top. This will need to be trimmed. The small part of the cone should sit flat on a flat surface.



4. Be careful trimming top edge. These little cutting mats are awesome! I just roll the edge that needed to be trimmed to the bottom, and trimmed a little at a time till it was perfectly even and round.



5. Glue bottom on pot and wipe away excess glue.



6. Glue around larger circle. Then insert it into the pot about 1/8 inch down from top. I used a tooth pick and my blade to help poke it down into position. Then I gently wipe away excess glue.



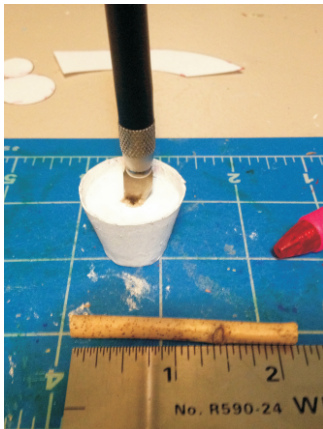
Pot is ready for primer.



7. I like to spray a coat of primer on to seal the chipboard, also makes paint stick well.



8. Find twig or stick for the trunk of tree. It should be about 2 1/4 inch to make the same size of tree in picture.



9. Poke a hole in top of planter. I use the blade and twist it in. A drill would also work. Be careful not to make hole bigger than your tree trunk.



10. Put glue on the bottom of your trunk and poke it into the pot. Wipe away excess glue.



11. Paint and flock the pot with coco. Then add your loofha tree and berries and you're all done!

A tutorial by Tom Hull for making loofha trees can be found here:

<http://www.cardboardchristmas.com/papateds/fixtree.html>